

Montageanleitung

Installation instruction

Instructions de montage

Instrucciones de montaje

Instruções de instalação

Istruzioni di montaggio

Montage-instructie

Asennusohjeet

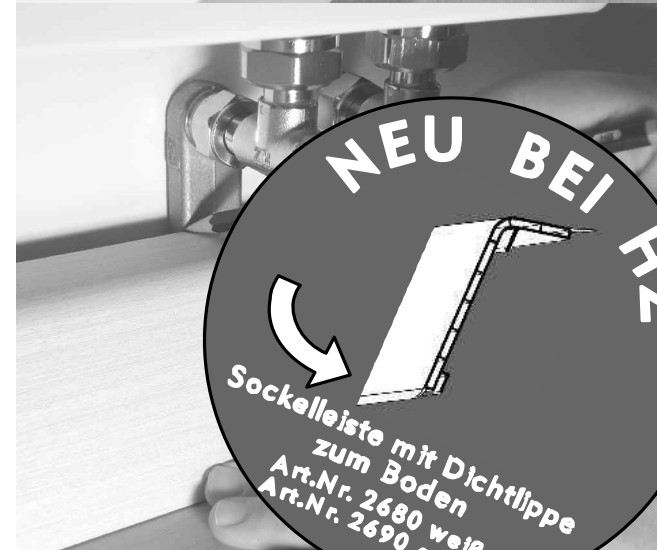
Montážní navod

Opis Montazu

Пособие по монтажу

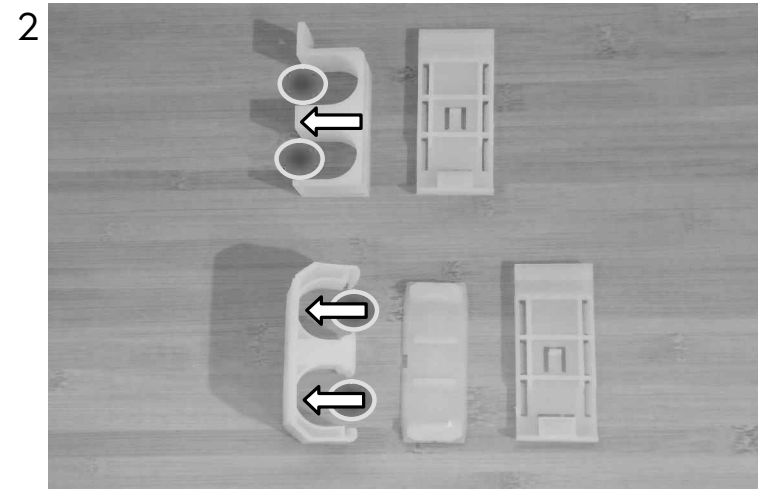
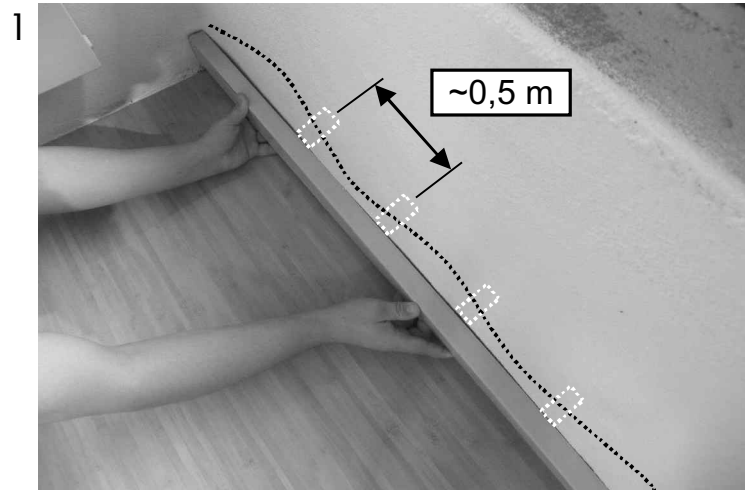
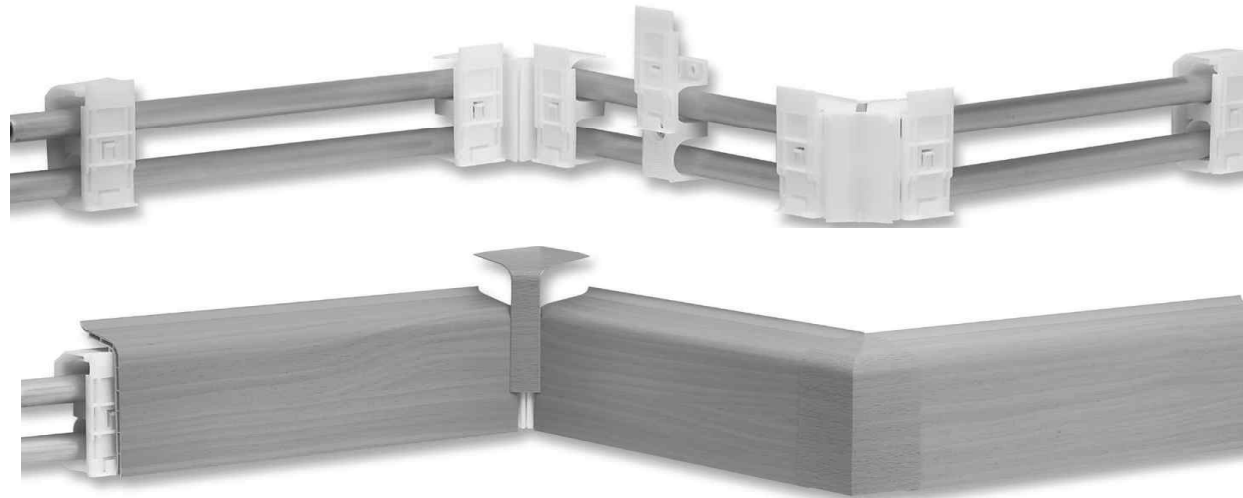
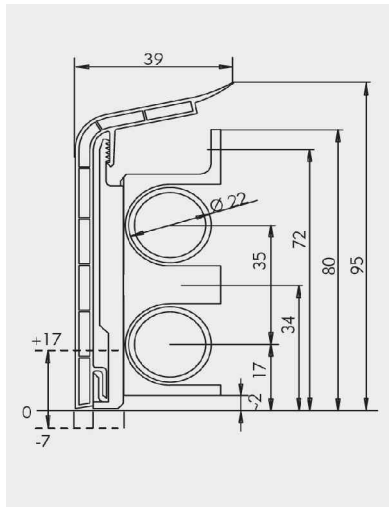
Montaj yardımı

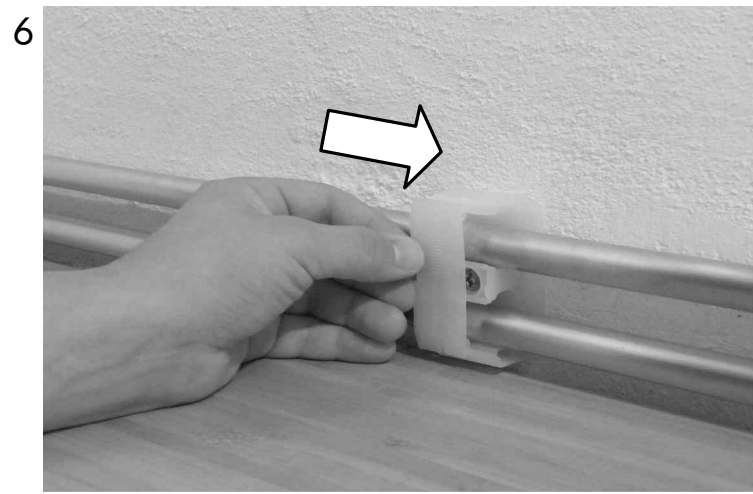
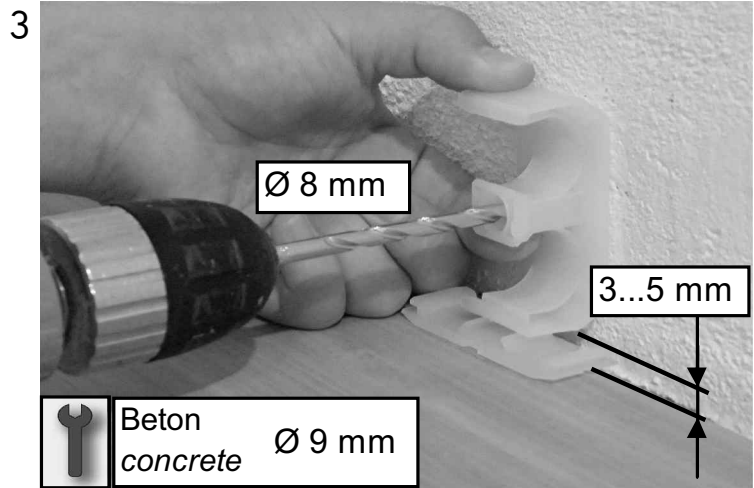
Monteringsanvisning



Montageanleitung SLF 2000: Das universelle Profil zur Rohrverkleidung bis 22 mm in acht Dekoren  
*Installation instruction: SLF 2000 and Basics: The universal profile up to 22 mm in eight finishes*

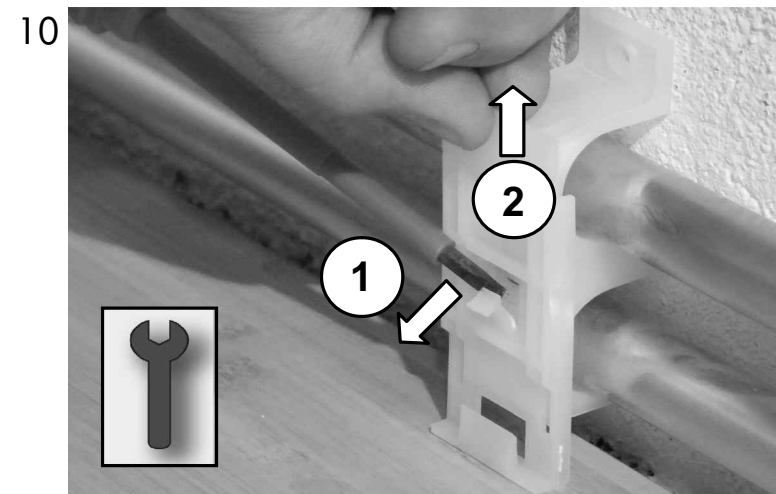
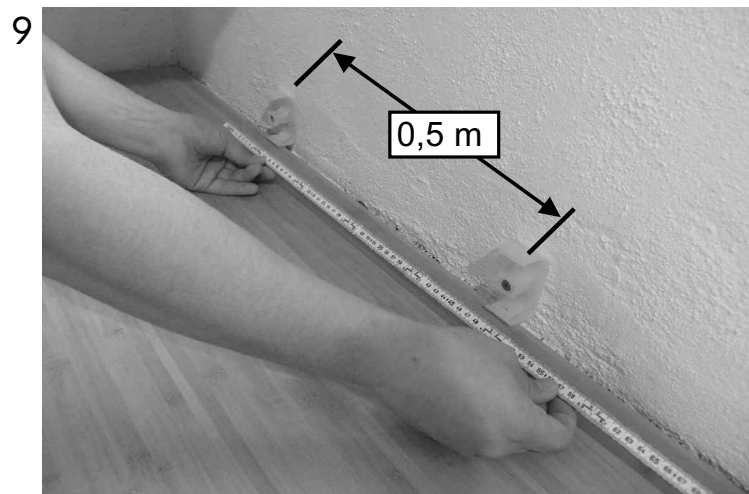
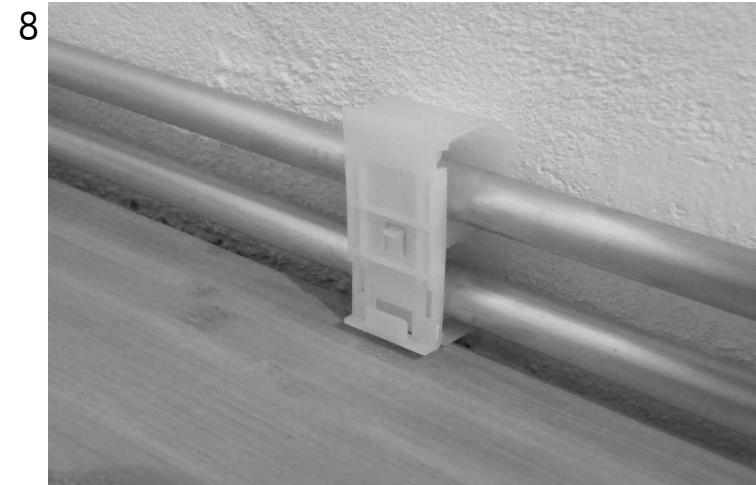
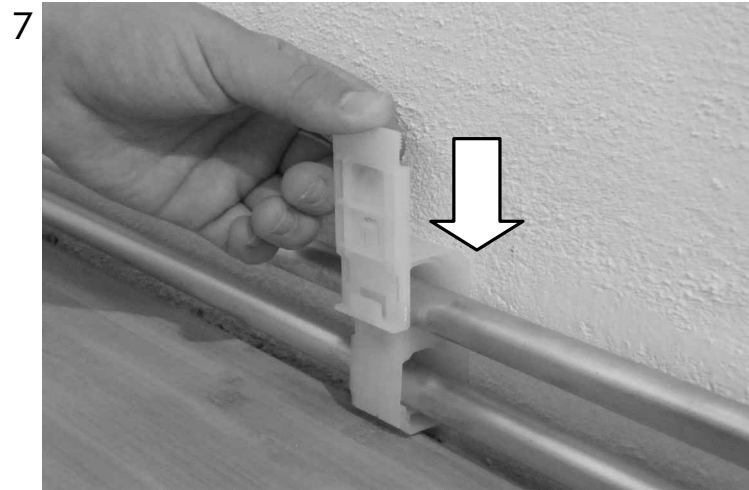
---



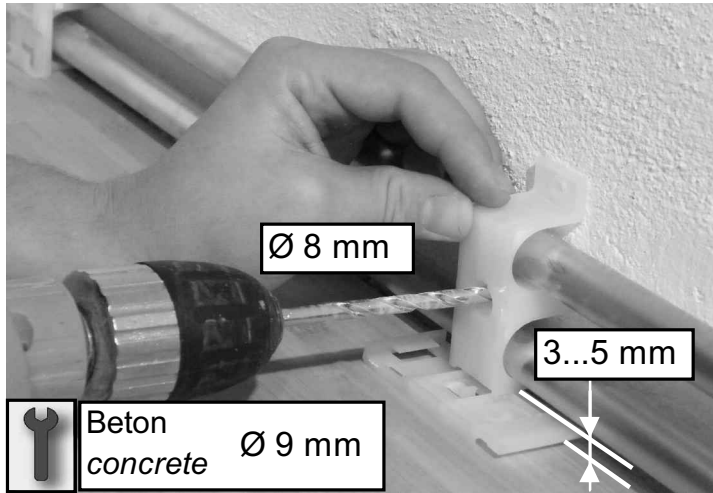


Montageanleitung SLF 2000: Das universelle Profil zur Rohrverkleidung bis 22 mm in acht Dekoren  
*Installation instruction: SLF 2000 and Basics: The universal profile up to 22 mm in eight finishes*

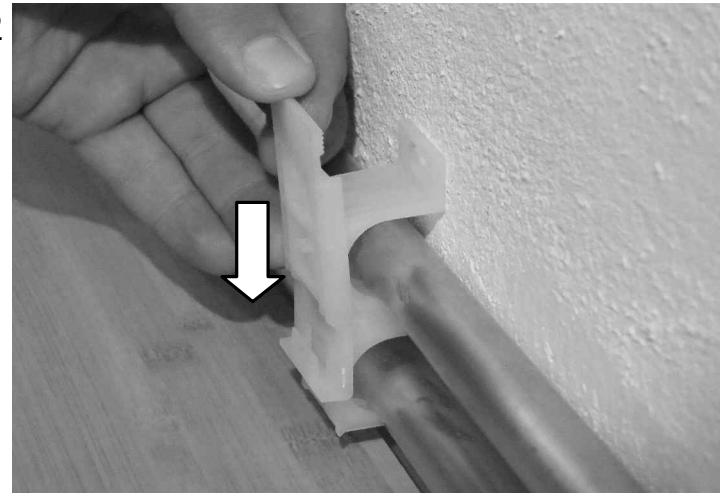
---



11



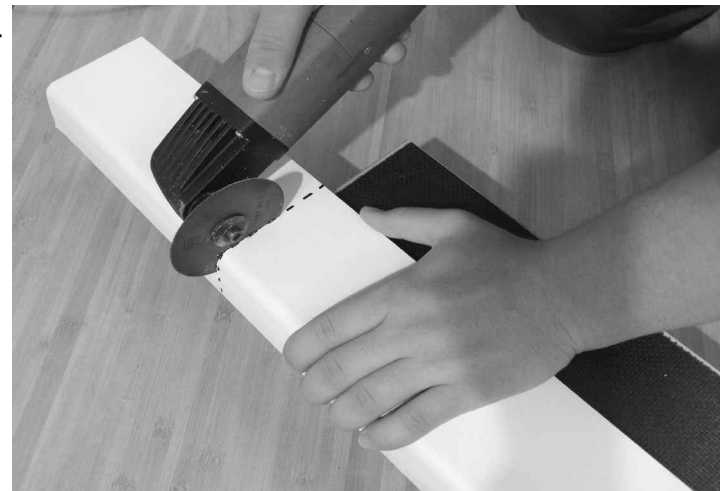
12



13

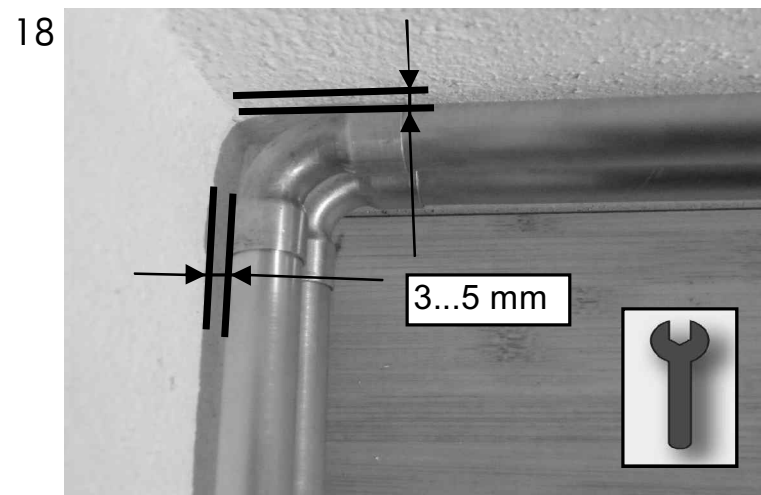
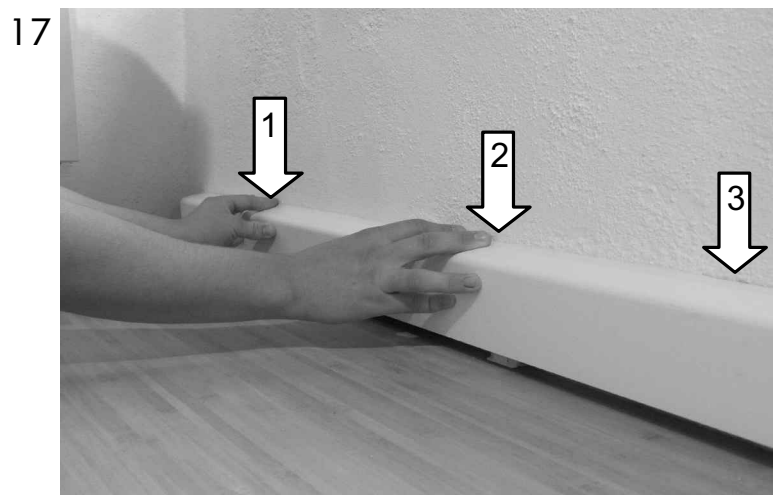
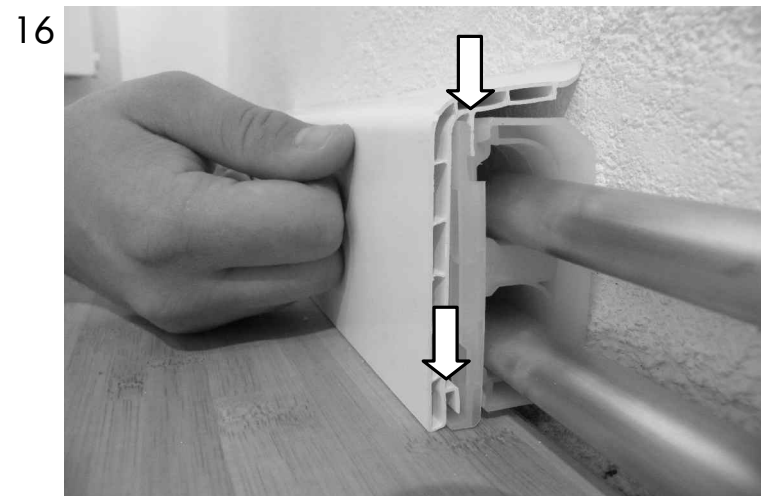
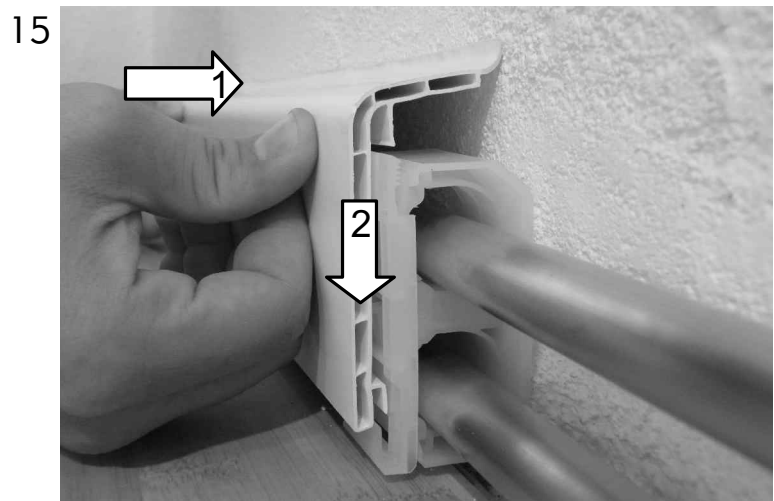


14

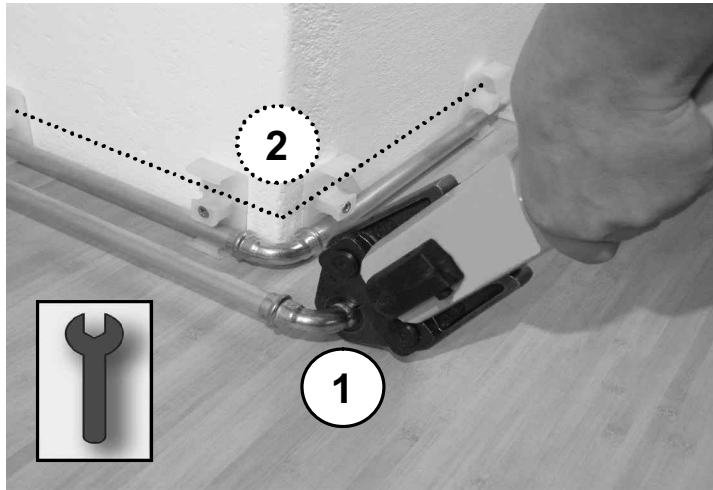


Montageanleitung SLF 2000: Das universelle Profil zur Rohrverkleidung bis 22 mm in acht Dekoren  
*Installation instruction: SLF 2000 and Basics: The universal profile up to 22 mm in eight finishes*

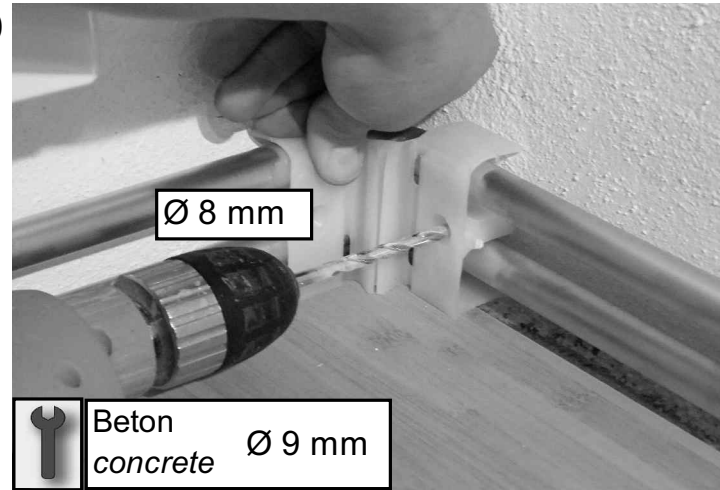
---



19



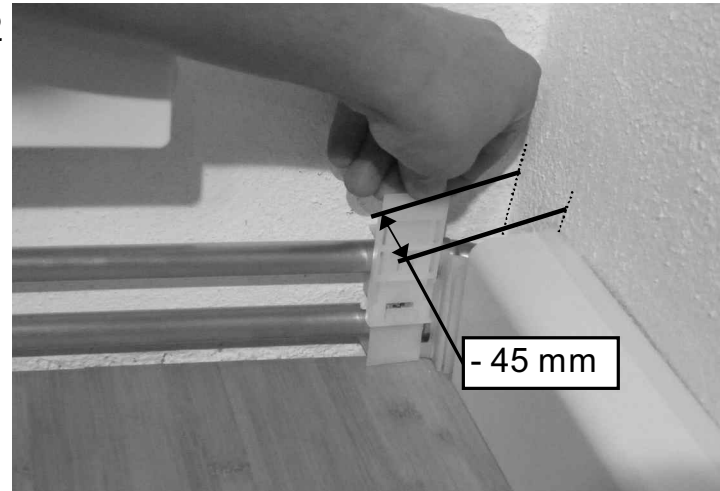
20



21



22



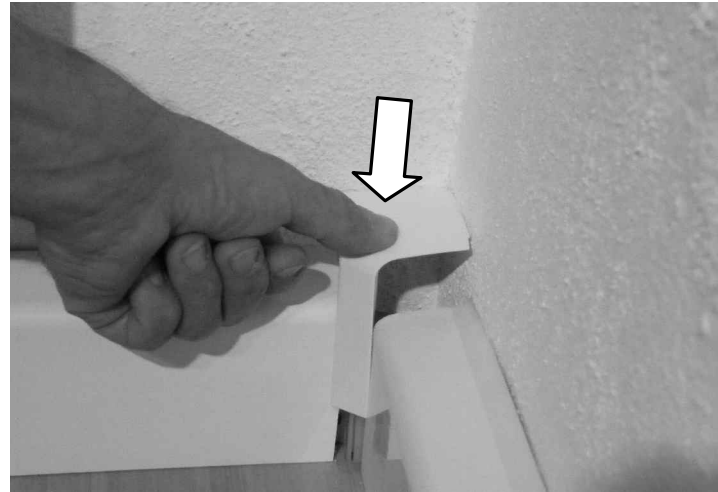
Montageanleitung SLF 2000: Das universelle Profil zur Rohrverkleidung bis 22 mm in acht Dekoren  
*Installation instruction: SLF 2000 and Basics: The universal profile up to 22 mm in eight finishes*

---

23



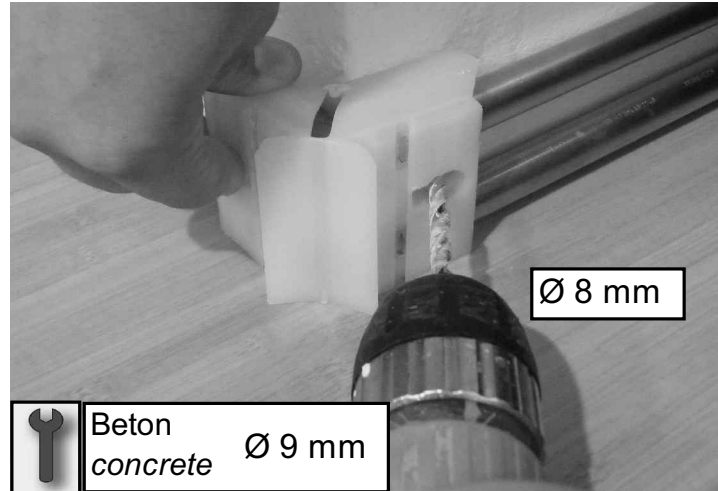
24



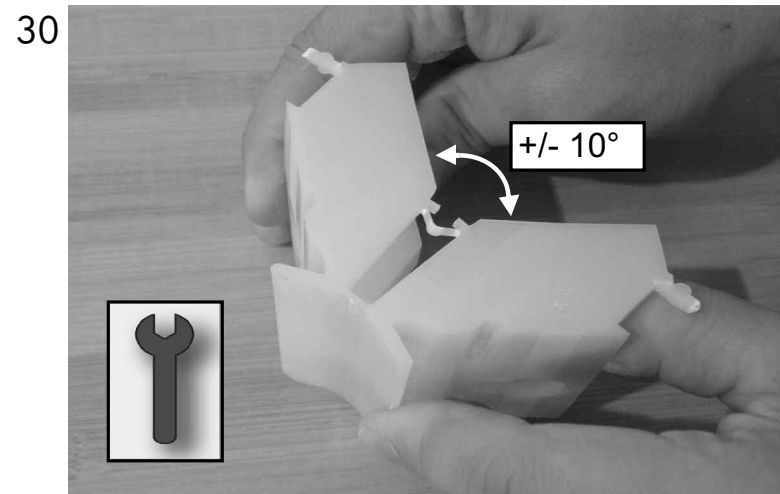
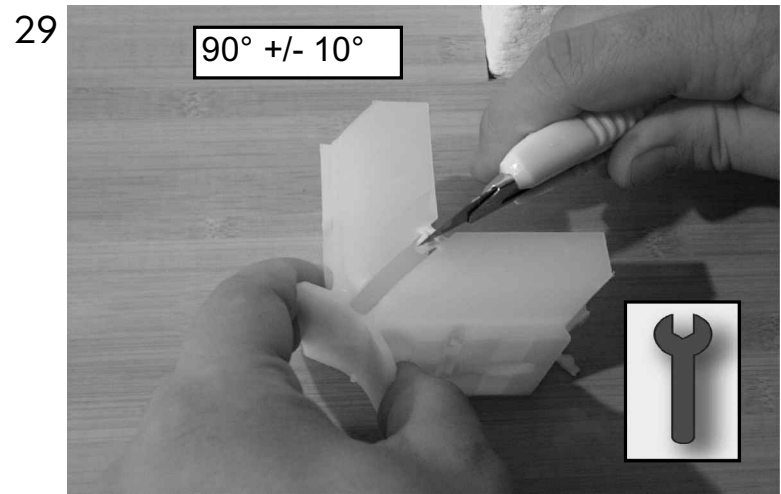
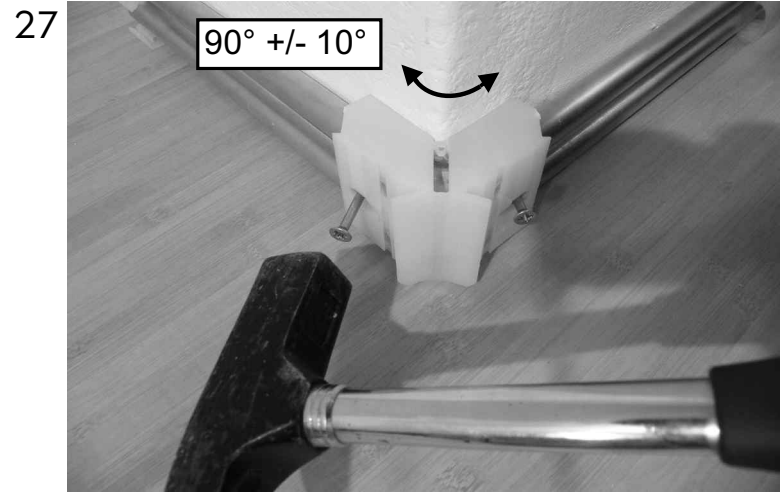
25



26

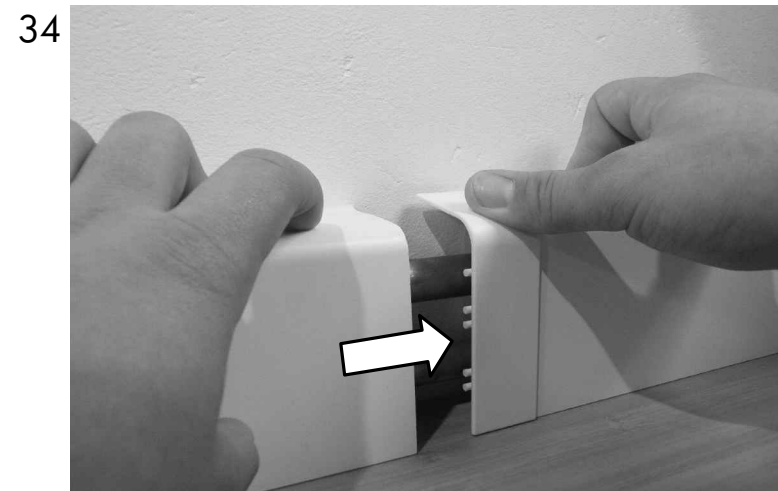
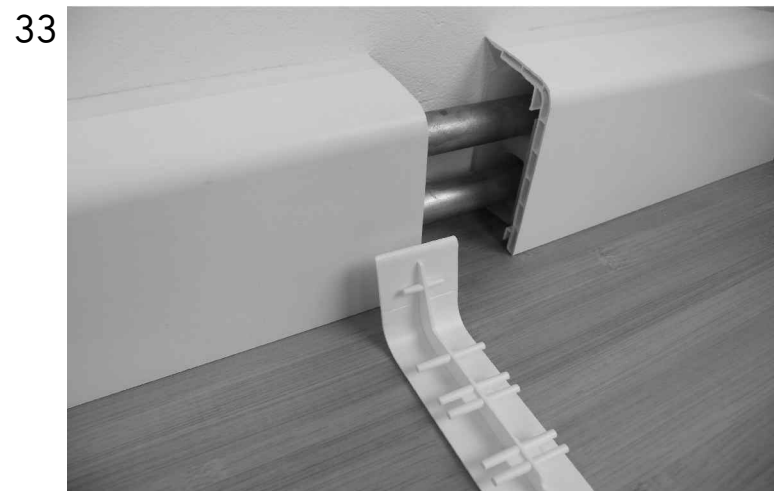
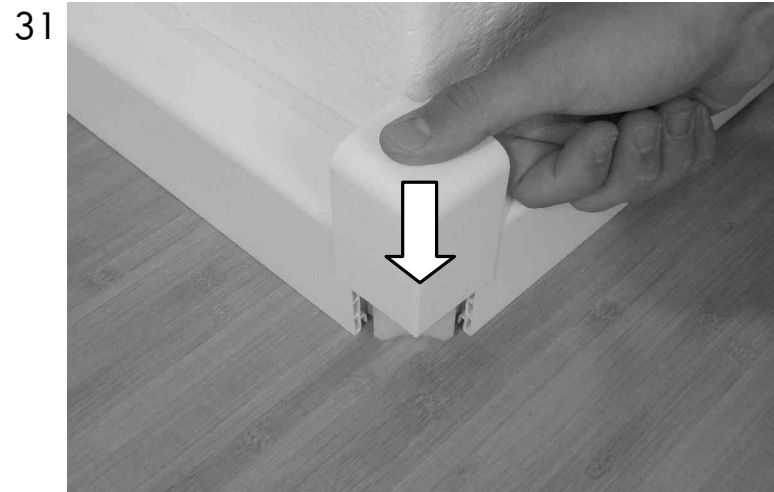




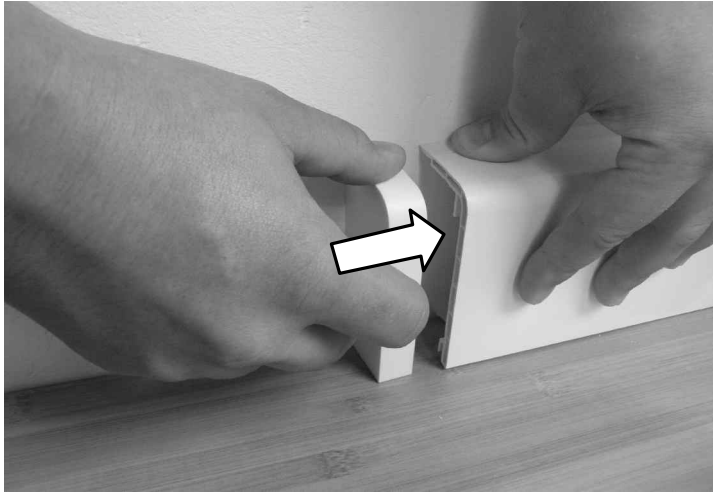


Montageanleitung SLF 2000: Das universelle Profil zur Rohrverkleidung bis 22 mm in acht Dekoren  
*Installation instruction: SLF 2000 and Basics: The universal profile up to 22 mm in eight finishes*

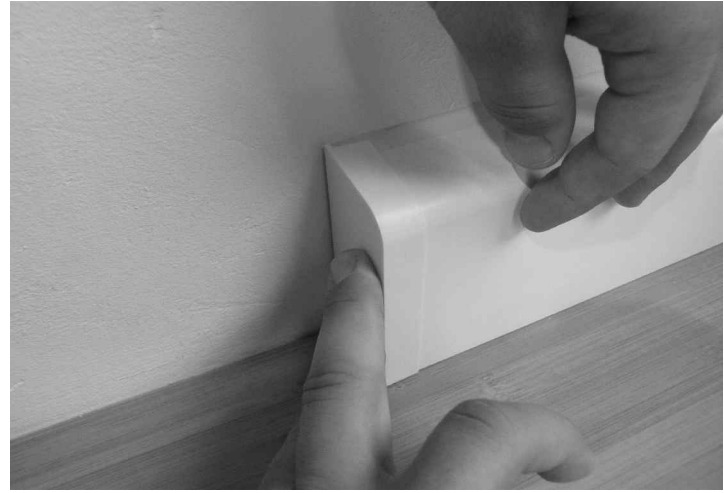
---



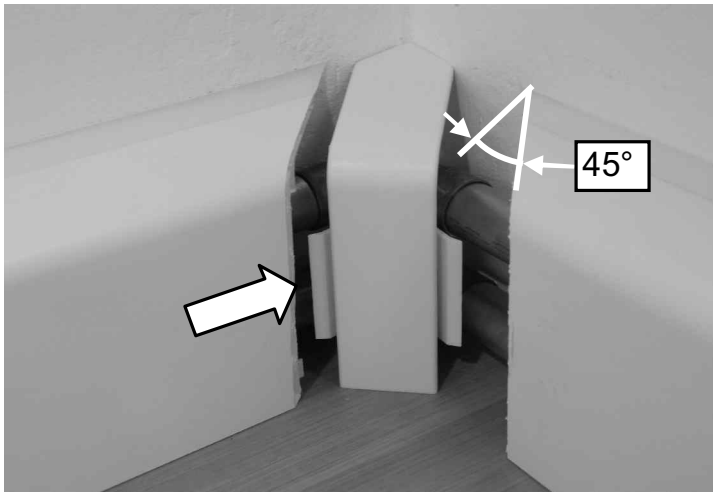
35



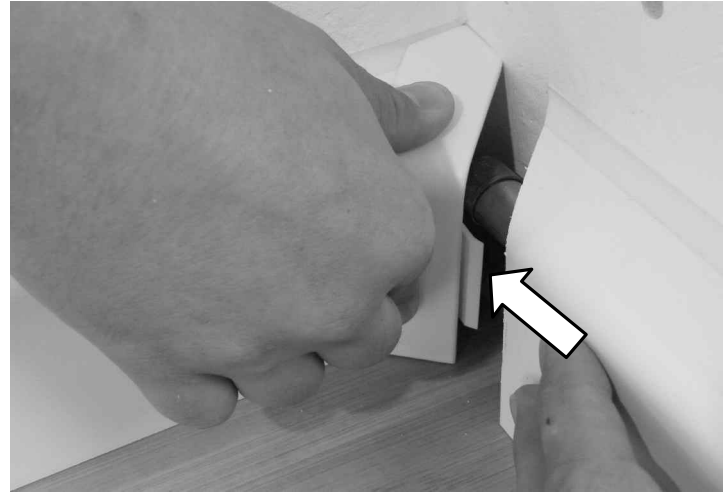
36



37



38



Montageanleitung SLF 2000: Das universelle Profil zur Rohrverkleidung bis 22 mm in acht Dekoren  
*Installation instruction: SLF 2000 and Basics: The universal profile up to 22 mm in eight finishes*

---

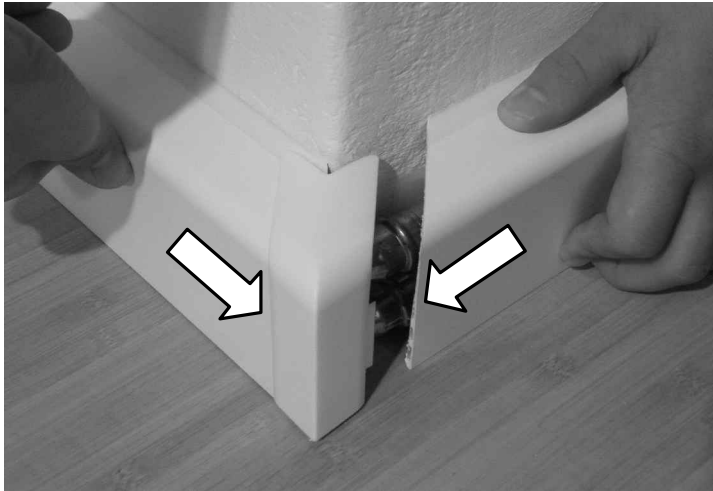
39



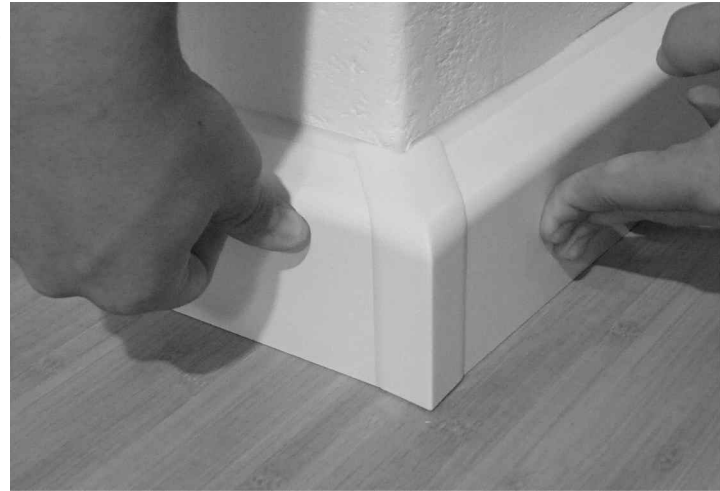
40

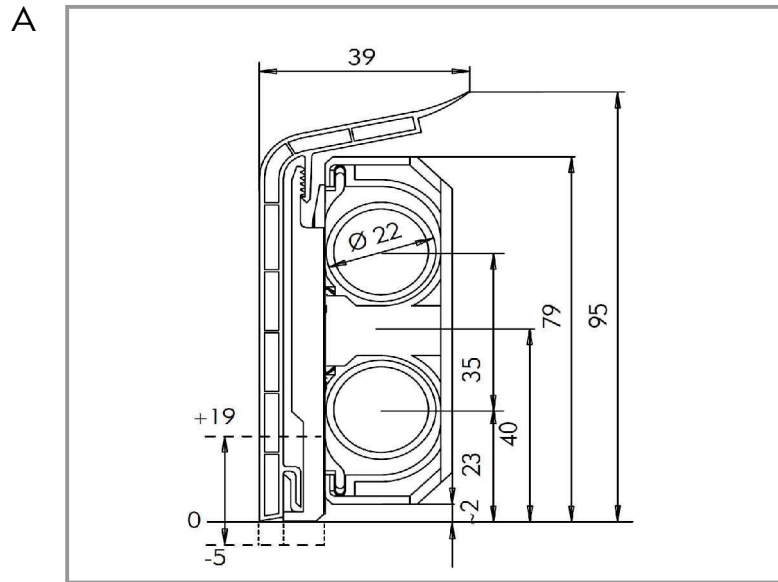


41



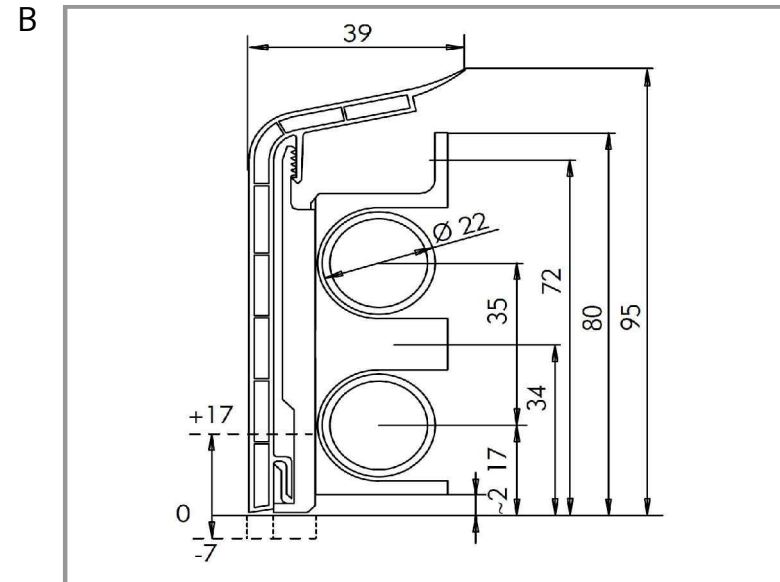
42





Schelle Art. 2250

Bracket art. no. 2250



Schelle Art. 2150

Bracket art. no. 2150



Die Schelle Art.-Nr. 2250 ist besonders bei unebenen Wänden, weichem oder schadhaftem Putz geeignet. Der empfohlene Schellenabstand beträgt 50 cm. Bei den Ecken besteht die Wahlmöglichkeit zwischen Eckschellen mit Formteil (ohne Gehrungsschnitt) und Ecken für Sonderlösungen (mit Gehrungsschnitt). Bei Verwendung der Inneneckschelle mit Inneneckformteil sind für jedes zuzuschneidende Profil 45 mm in der Länge abzuziehen.

*Bracket art. no. 2250 is particularly well suited for uneven walls, damaged or soft plaster. We recommend spacing the brackets every 50 cm.*

*When using the inner corner you need an inner corner bracket, when using the outer corner an outer corner bracket is needed.*

*When cutting the skirting board profile to size, remember that for each inner corner bracket used the profile has to be shortened by 45 mm.*

*For working without inner or outer corner brackets use inner or outer corner for custom solutions and mitre cuts are needed.*



Falls eine spannungsfreie Rohrausdehnung nicht möglich ist, sind Ausgleichsbögen oder handelsübliche Kompensatoren einzubauen!

*If expansion of the pipes without stress is not possible, standard commercial expansion joints should be used.*